

Appendix 2: Proposed New Methodology for Allocating Exceptional Element 2 Funding

Factors proposed within exceptional Element 2 criteria related to size of school

- The size of the school
- The number of children and young people with EHCPs and the number identified at SEN support
- The school's notional SEN budget

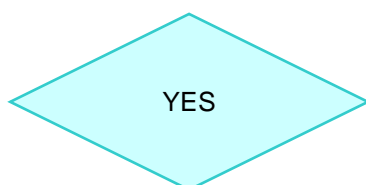
Factors proposed within exceptional Element 2 criteria related to higher proportions of SEN pupils

- % of children and young people with identified SEN in comparison to LA cohort averages. (proportion of cohort with EHCP plus the average number at SEN support over the past 3 years)
- The school's notional SEN budget

Decision Chart

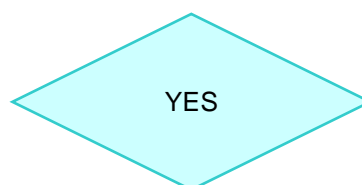
Criteria 1a **Size**

'Is this a small school or academy?'
(100 pupils or less?)

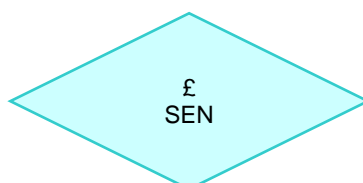


Criteria 1b **Inclusive**

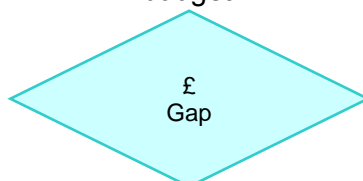
'Does the school or academy have a higher % of pupils with identified SEN than LA average?'



Criteria 2 'The numbers of pupils with EHCPs X £6,000 + The numbers of pupils at SEN support X notional SEN support funding rate (as determined by LA, see table below)'



Criteria 3 'What is the gap between £ SEN and the school or academy's notional Element 2 SEN budget?'



Size of school / Pupil Nos	Notional SEN support funding rate
<25	£2,200
25 to 50	£1,700
51 to 75	£1,500
76 to 99	£1,250
100 and over	£750

